

ESIM 2025 - 2026/27

Summer School

Prague, Czech Republic



CZECH SOCIETY *of*
INTERNAL
MEDICINE

Organizers

Director:

Jan Škrha jr., MD, PhD

Member of the Executive Committee of the Czech Society of Internal Medicine

Former Czech Young Internists Representative in EFIM

Member of EFIM Telemedicine WG and EFIM Critical Appraisal Guidelines WG

Co-directors:

Javier Moreno Díaz, MD

Director of ESIM Summer school in Madrid, Spain

Zdeněk Monhart, MD, PhD, FEFIM

Scientific secretary of the Czech Society of Internal Medicine

Member of EFIM Ultrasound WG and EFIM Critical Appraisal Guidelines WG

YI representative:

Martin Šatný, MD



Our Local Team



Our experiences

Organizers of Czech Society of Internal Medicine Congresses
(more than 1000 participants annually)

Participants of events on European level (ESIM, EASIM,
MIRCIM)

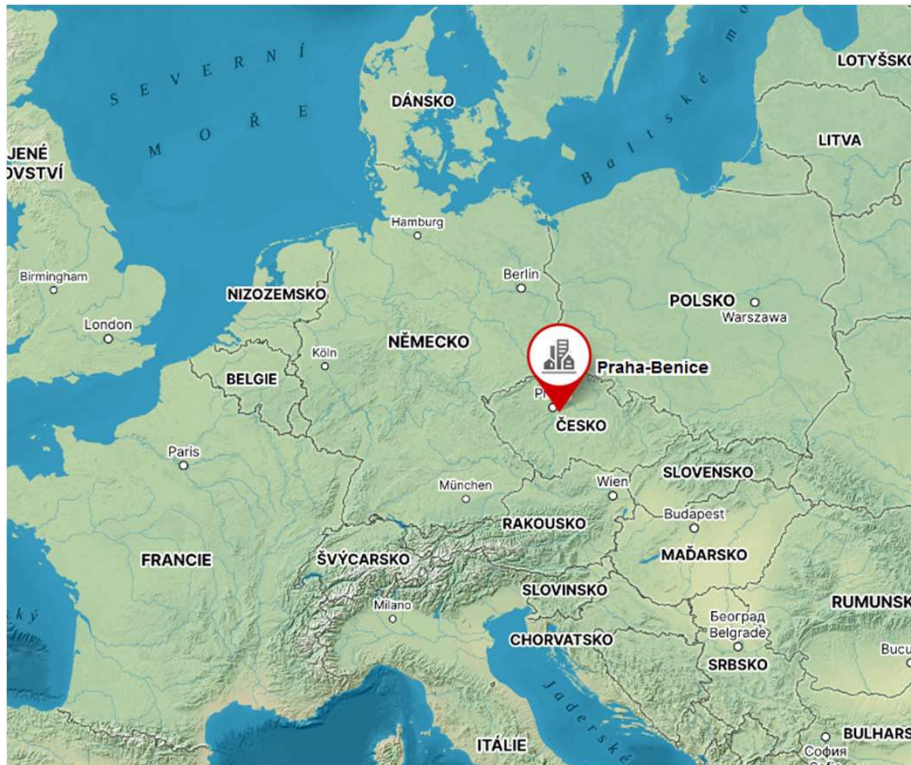
Czech Society of Internal Medicine

ECIM 2013

WCIM 2024



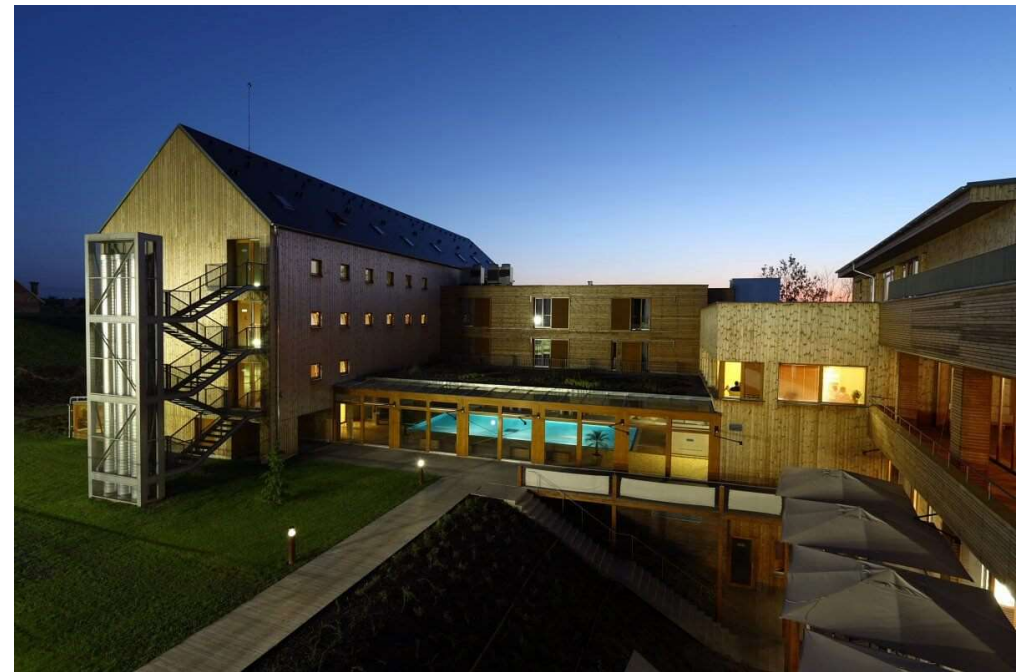
The Venue



Park Holiday Hotel (<https://www.hotelparkholiday.cz/en/>)



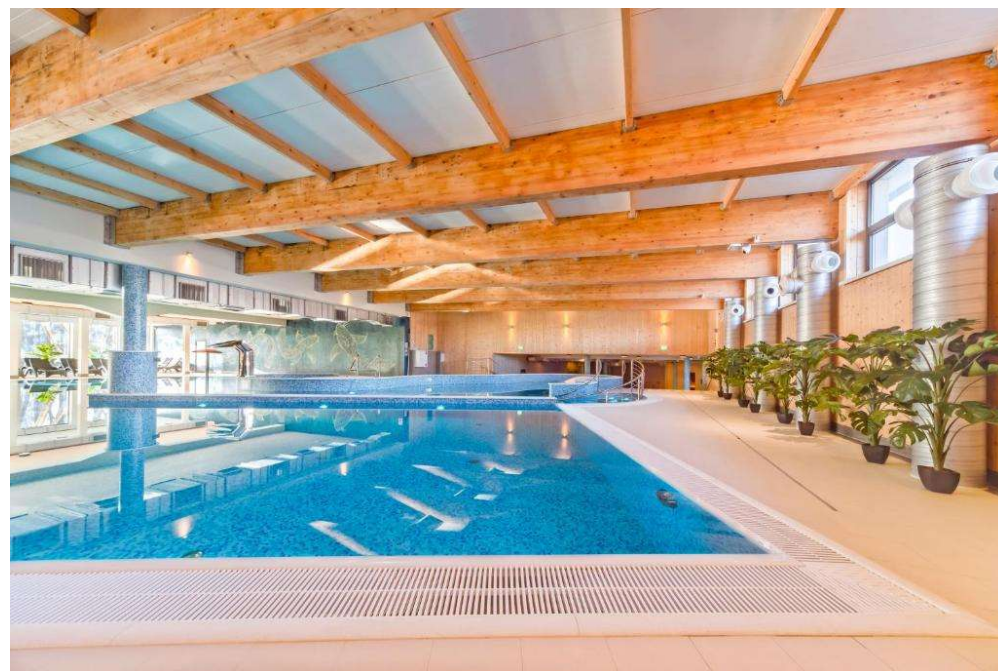
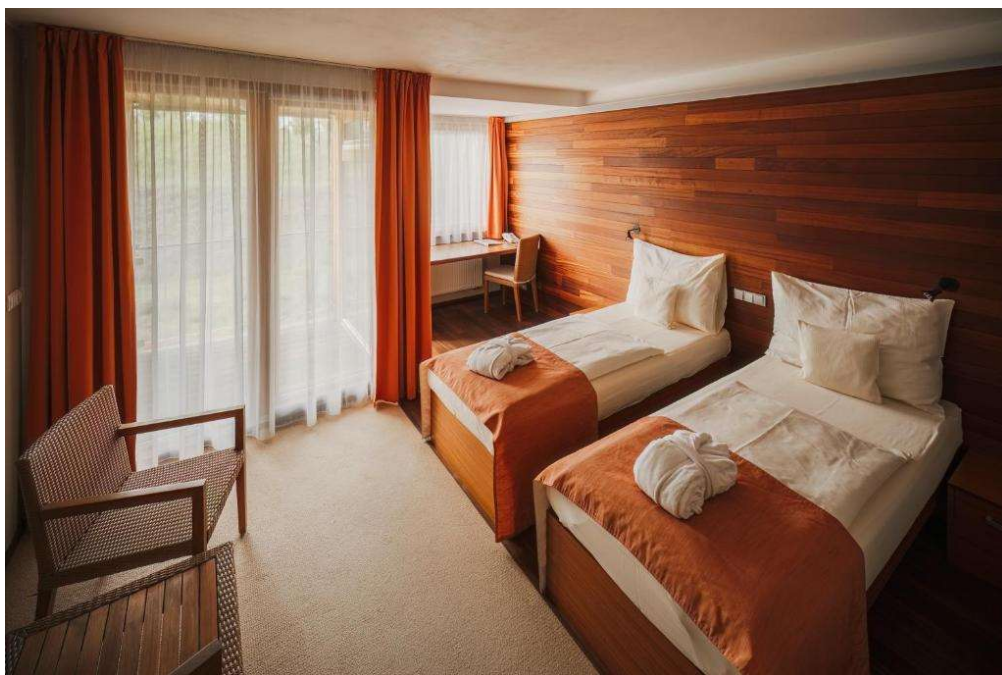
The Venue



Park Holiday Hotel (<https://www.hotelparkholiday.cz/en/>)



The Venue



Park Holiday Hotel (<https://www.hotelparkholiday.cz/en/>)



The Venue



Park Holiday Hotel (<https://www.hotelparkholiday.cz/en/>)



Budget

Assumed revenues:

Registration fee 1250 € per person

Approx. number of participants 40 – 50

50 000 – 62 500 €

Assumed expenses:

Conference rooms, catering, accommodation – 40 000 €

Social program, travel costs, graphic, other expenses – 10 000 €

Agency fee – 5 000 €



Up-to-date Lectures on Most Practical Topics



Case Presentations, Choosing Wisely etc.



Hands-on POCUS Workshop



Hands-on Workshop - Acute Medical Conditions



Social Functions



Social Functions



Social Functions



Why ESIM in Prague ?

„Youth for youth“

Experienced team

Realistic budget

Location in the Heart of Europe

First ESIM in Czech Republic



Administrative Support

- The application is approved by the local Czech Society of Internal Medicine, represented by the head of the society, prof. Richard Češka, MD, FACP, FEFIM
- Contact: Lucie Votavova
Executive Manager of the Czech Society of Internal Medicine
votavova@interna-cz.eu
- Administrative support: GALÉN-SYMPOSIUM
<https://www.gsymposium.cz/>



CZECH SOCIETY *of*
INTERNAL
MEDICINE