



Italian Society of Internal
Medicine

Application to host

ESIM SUMMER SCHOOL

Ischia, June 2025



Director

Prof. Alberto M. Marra Associate Professor of Internal Medicine at the “Federico II” University of Naples

With a longstanding history of involvement and commitment to EFIM, Professor Marra has served as Chairman of the Young Internists of Europe from 2019 to 2022 and is the founder of the working group on gender medicine within EFIM (IMAGINE). Additionally, Professor Marra has previously organized editions of ESIM in Sardinia from 2014 to 2016 under the supervision of Prof. Nicola Montano, former EFIM president.

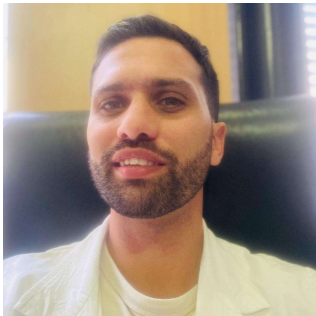
N. Indexed papers/ 1st authors/ 2 nd Authors/last author	148/32/6/15
Total Impact Factor	559,237
Average Impact Factor	3,77
Impact Factor as First Author	140,38 (26% total IF)
Average Impact Factor as First Author	4,38
Total citations	2574 (Scopus);
H index	30(Scopus);



To download CV
scan this



Co-Directors



Ludovico Furlan
Assistant Professor
University of Milan



Gemma Ortiz
Hospital de Terraza
Barcelona (Spain)
EFIM-ECG board
Member
Former ESIM Co-
Director
2022-24



**Javier Moreno
Díaz**
Medical Director
Hospital Royo
Villanova
Saragoza (Spain)
Former ESIM
Director 2022-24



The Italian Society of Internal Medicine is the oldest Italian Scientific Society, founded in 1887, and actually representing almost 4000 members.

Yearly

1 national congress

19 local regional congresses and events

22 courses (residential, hybrid)

12 On-line courses

4 schools



Giovani
Internisti
SIMI



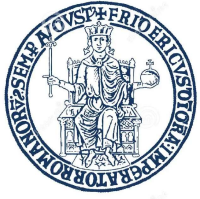
Yearly

1 congress

3 courses

9 webinars

1 podcast



UNIVERSITÀ DEGLI STUDI
DI NAPOLI FEDERICO II

The oldest public university in the world, founded on June 5th 1224 by Emperor Frederick II of Swabia with the intention of creating a governing class of state administrators and men of culture, free from any kind of external conditioning (mainly at the time of the Catholic Church) on their intellectual activities.



Nowadays the university is made up of four schools, twenty-six departments, an academic staff of more than 3,000 individuals and an administrative staff of more than 5000. Current student enrollment is still about 100,000 total.



THE LOCATION



**ischia
is more**

How to reach Ischia



Transfers will be provided from Naples airport to Ischia lasting an average of 1h including naval transfer.

Athens	Seasonal: Birmingham, East Midlands, Edinburgh, Glasgow, Leeds/Bradford, London–Stansted, Manchester
Seasonal: Dublin	Amsterdam
Ancona (ends 30 March 2024) ^{[16][17]}	Frankfurt, Munich
Casablanca	Luxembourg
Sharm El Sheikh	Seasonal: Copenhagen, Oslo
Seasonal: Hurghada	Seasonal: St. Gallen/Altenrhein
Paris–Charles de Gaulle	Casablanca
Seasonal: Malta	Alghero, Barcelona, Bergamo, Brussels, Bucharest–Otopeni, Budapest, Cagliari, Catania, Dublin, Edinburgh, Gdańsk, Genoa, Kraków, Lisbon, London–Luton, London–Stansted, Madrid, Málaga, Malta, Manchester, Marrakech, Milan–Malpensa, Palermo, Paphos, Prague, Seville, Sofia, Tel Aviv, Tenerife–South, Trapani, Trieste, Turin, Valencia, Venice, Verona, Vienna, Warsaw–Chopin (ends 29 March 2024), ^[27] Warsaw–Modlin (resumes 31 March 2024), ^[28] Wrocław, Zagreb
Seasonal: Belgrade	Seasonal: Beauvais, ^[29] Bordeaux, Chania, Copenhagen, Corfu, Eindhoven, Kaunas, Marseille, ^[30] Memmingen, Menorca, Mykonos, Nuremberg, ^[31] Palma de Mallorca, Rhodes, Santorini, Shannon, Thessaloniki, Toulouse, ^[32] Zakynthos
Seasonal: Riga	Seasonal: Copenhagen, Stockholm–Arlanda
Seasonal: Philadelphia (begins 7 June 2024) ^[18]	Seasonal charter: Prague
Vienna	Seasonal: Tel Aviv
London–Heathrow	Zürich
Seasonal: Brussels	Seasonal: Lisbon
Seasonal: New York–JFK (begins 23 May 2024) ^[19]	Amsterdam, Paris–Orly
Amsterdam, Athens, Barcelona, Basel/Mulhouse, Berlin, Catania, Geneva, London–Gatwick, London–Luton, Lyon, Marrakech, ^[20] Milan–Malpensa, Munich, Nice, Palermo, Paris–Charles de Gaulle, Paris–Orly, Sharm El Sheikh, Zurich	Seasonal: Birmingham, Bristol, East Midlands, Glasgow, London–Gatwick, Manchester, Newcastle upon Tyne
Seasonal: Bristol, Cagliari, Comiso (begins 24 June 2024), ^[21] Corfu, Dubrovnik, Gran Canaria, Edinburgh, Heraklion, Hurghada, Ibiza, Kefalonia, Kos, Lampedusa, Malta, Manchester, Marsa Alam, Menorca, Mykonos, Nantes (begins 3 June 2024), ^[22] Olbia, Palma de Mallorca, Porto, Preveza (begins 1 June 2024), ^[23] Pula, Rhodes, Santorini, Sitia (begins 24 June 2024), ^[24] Skiathos, Split, Tel Aviv, Zakynthos (begins 1 June 2024) ^[25]	Tunis
Düsseldorf, Stuttgart	Istanbul
Seasonal: Cologne/Bonn, Hamburg	Seasonal: Newark
Seasonal: Helsinki	Athens (begins 21 March 2024), ^[33] Bilbao, Genoa, Nantes, Palermo, Turin, Venice
Dubai–International	Seasonal: Aalborg, Cagliari, Heraklion, Karpachos, Kefalonia, Lampedusa, Lourdes, Lyon (begins 11 April 2024), ^[34] Mykonos, Olbia, Pantelleria, Preveza/Lefkada, Rhodes, Santorini, Skiathos, Split (begins 31 May 2024), ^[35] Zakynthos
Madrid	Barcelona
Milan–Linate, ^[26] Rome–Fiumicino	Abu Dhabi, Bucharest–Otopeni, Budapest, Katowice, London–Gatwick, Prague, Sofia, Tel Aviv, Tirana, Turin, ^[36] Vienna, Warsaw–Chopin
	Seasonal: Cluj-Napoca, Corfu, Ibiza, Mykonos, Santorini, Skiathos

110 direct flight from the most important cities of Europe and US
Multiple daily flight from Milan, Rome, Paris, Frankfurt, Munich

**ischia
is more**



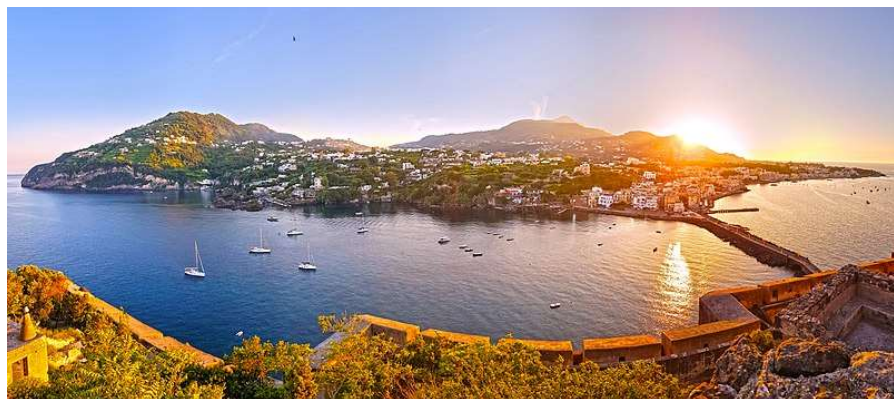
The green island



**ischia
is more**



landscapes



ischia is more



Spa and thermal



**ischia
is more**



Food and wine

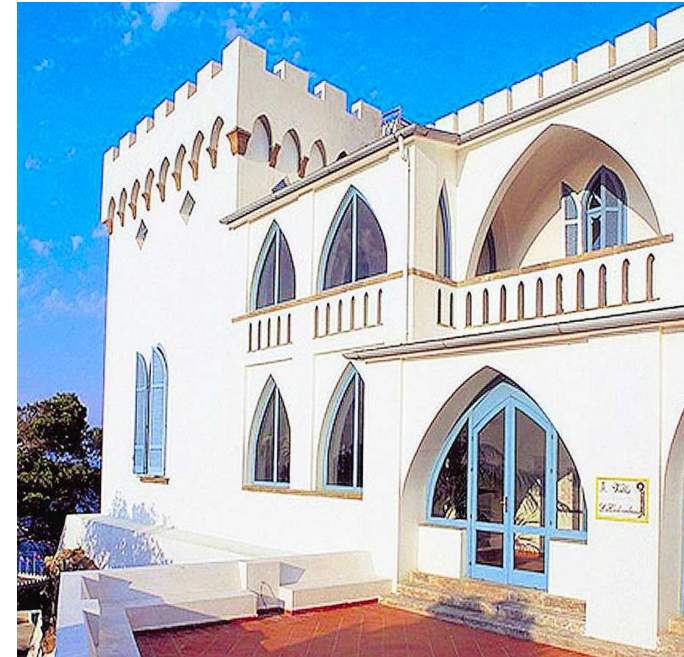




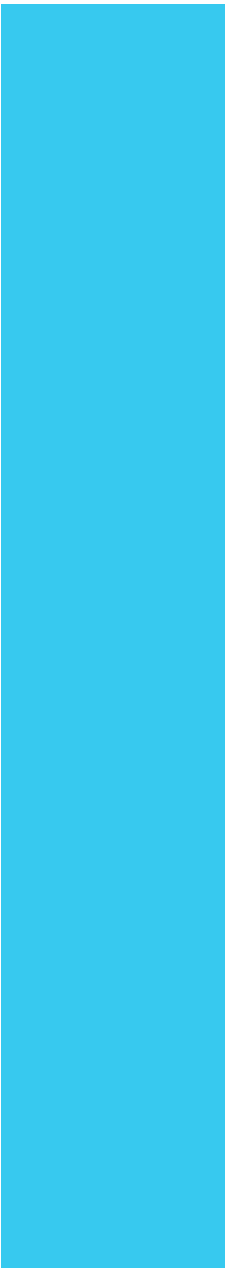
THE VENUE

Villa "la Colombaia"

"Villa La Colombaia", the historical summer residence of the great director **Luchino Visconti**. The venue is located in the village of Forio d'Ischia, in the **beautiful hamlet of Zaro**. The Villa Colombaia Ischia, built in the late 1800s and early 1900s, was acquired to **public heritage** and declared of cultural and architectural interest by the Ministry of Cultural Heritage and Activities. Thanks to the support of the municipality of Forio D'Ischia, Villa Colombia will be granted a **free loan for use for the duration of the school**. The villa has both a **large hall** in which host the ESIM lectures and **several side rooms** in which to conduct both group work and possible ultrasound workshops. Space outside can be used for group activities.



Villa "la Colombaia"



Accommodation @ Bristol Hotel

It is located within the village of Lacco Ameno and is surrounded by greenery, where tranquility and the sounds of nature prevail. The structure enjoys a splendid panoramic position and can offer guests on vacation in Ischia, a dynamic and regenerating stay in a fresh and welcoming atmosphere. In addition, having many rooms with a view, it offers evocative views and saturated sunsets for an exclusive vacation to be experienced.





THE STRUCTURE

The structure of the school will provide:



Standing on the shoulders of giants

Each day a special guest will be present, giving a lecture focused mainly on advances in internal medicine in the diagnosis and treatment of major diseases in internal medicine.



Methodology in Internal Medicine

daily workshops on various topics related to methodology such as collecting evidence, critical reading of scientific papers, diagnostic and therapeutic appropriateness (Choosing Wisely), clinical trial design. Building on the previous ESIM experience in Sardinia, efforts will also be made to finalize the possible publication of a scientific paper.



POCUS

a single district (heart, lungs, large vessels and abdomen) will be addressed each day. There will first be a theoretical lecture and then the residents will practice on special workstations.



Non-clinical topics

Specific workshops on topics of non-clinical relevance but essential for the training of a young internal medicine resident such as: empathy, environmental impact of modern medicine, burn-out. Possibility to organize team-building activities.



Case-Reports from the residents

Participants will be asked to submit (1 per country) a case report which will be allocated specifically on one of the following categories. Therefore, each day case reports will be clustered according to the following topics: Errors in medicine, Abnormal presentation of common disease, Diagnosis of rare disease with common clinical presentation, and Overtreatment/Overdiagnosis.



“Never first time on a patient”

Series of hands-on practical workshops from a medical simulation lab.

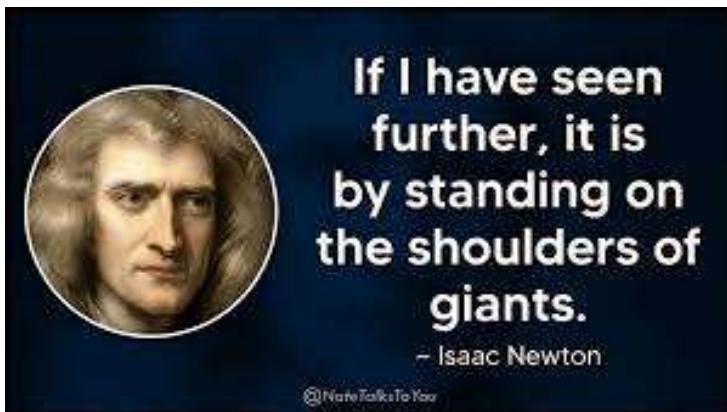


Standing on the shoulders of giants

Each day a special guest will be present, giving a lecture focused mainly on advances in internal medicine in the diagnosis and treatment of major diseases in internal medicine.

- How Immunology changed Internal Medicine
- How Genetics changed Internal Medicine
- How COVID-19 changed Internal Medicine
- How Gender changed Internal Medicine

- How Artificial Intelligence changed Internal Medicine
- How Invasive Cardiology changed Internal Medicine
- How Advanced Imaging changed Internal Medicine
- How Philosophy changed Internal Medicine





Methodology in Internal Medicine

daily workshops on various topics related to methodology such as collecting evidence, critical reading of scientific papers, diagnostic and therapeutic appropriateness (Choosing Wisely), clinical trial design. Building on the previous ESIM experience in Sardinia, efforts will also be made to finalize the possible publication of a scientific paper.



Guidelines on the management of atrial fibrillation in the emergency department: a critical appraisal

Giorgio Costantino¹ · Gian Marco Podda² · Lorenzo Falsetti³ · Primiano Iannone⁴ · Ana Lages⁵ · Alberto M. Marra⁶ · Maristella Masala⁷ · Oluag Marie Reikvam⁸ · Florentia Savva⁵ · Jan Schovanek⁵ · Sjoerd van Bree⁵ · Inês João da Silva Chora⁵ · Graziella Privitera⁵ · Silvio Ragozzino⁵ · Matthias von Rotz⁵ · Lycke Wöhrte⁵ · Christopher Davidson⁸ · Nicola Montano¹

Received: 4 August 2016 / Accepted: 19 November 2016
© SIMI 2016

Abstract Several guidelines often exist on the same topic, sometimes offering divergent recommendations. For the clinician, it can be difficult to understand the reasons for this divergence and how to select the right recommendations. The aim of this study is to compare different guidelines on the management of atrial fibrillation (AF), and provide practical and affordable advice on its management in the acute setting. A PubMed search was performed in May 2014 to identify the three most recent and cited published guidelines on AF. During the 1-week school of the European School of Internal Medicine, the attending residents were divided in five working groups. The three selected guidelines were compared with five specific questions. The guidelines identified were: the European Society of Cardiology

guidelines on AF, the Canadian guidelines on emergency department management of AF, and the American Heart Association guidelines on AF. Twenty-one relevant sub-questions were identified. For five of these, there was no agreement between guidelines; for three, there was partial agreement; for three data were not available (issue not covered by one of the guidelines), while for ten, there was complete agreement. Evidence on the management of AF in the acute setting is largely based on expert opinion rather than clinical trials. While there is broad agreement on the management of the haemodynamically unstable patient and the use of drugs for rate-control strategy, there is less agreement on drug therapy for rhythm control and no agreement on several other topics.

Keywords Atrial fibrillation · Emergency department · Guidelines · Evidence-based medicine · Critical appraisal

A. Lages, O. M. Reikvam, F. Savva, J. Schovanek, S. van Bree, I. J. da Silva Chora, G. Privitera, S. Ragozzino, M. von Rotz, and L. Wöhrte are participants of the 22nd European Summer School of Internal Medicine.

Most of the references cited by the different guidelines can be found in the Supplementary Appendix.

Electronic supplementary material The online version of this article (doi:10.1007/s11739-016-1580-x) contains supplementary material, which is available to authorized users.

✉ Giorgio Costantino
giorgic2@gmail.com

¹ Fondazione IRCCS Ca' Granda, Ospedale Maggiore Policlinico, Dipartimento di Medicina Interna, Allergologia Immunologia Clinica, Università degli Studi di Milano, Via F. Sforza 34, Milan, Italy

² Unità di Medicina 3, Dipartimento di medicina Interna, ASST Santi Paolo e Carlo, Milan, Italy

³ Medicina Interna Generale e Semintensiva, Azienda Ospedaliero-Universitaria "Ospedali Riuniti", Ancona, Italy

⁴ Dipartimento di Emergenza, Ospedale del Tigullio, ASL4 Chiavarese, Lavagna, Genoa, Italy

⁵ The 22nd European Summer School of Internal Medicine, Muravera, Cagliari, Italy

⁶ IRCCS S.D.N., Naples, Italy

⁷ Azienda Ospedaliera Universitaria AOU Sassari Medicina Interna, Sassari, Italy

⁸ European School of Internal Medicine, Muravera, Cagliari, Italy

Clinical reasoning

- 1) How to make a diagnosis
- 2) Rare diseases
- 3) Uncertainty and errors in medicine
- 4) Decision threshold

Choosing Wisely & Environment

- 1) Healthcare systems and related environmental impact
- 2) Sustainability and adaptation: “Choices for the environment are healthcare choices.”
- 3) How to reduce environmental footprint of healthcare in everyday clinical practice

Critical appraisal of medical literature Cutting edges on relevant scientific articles

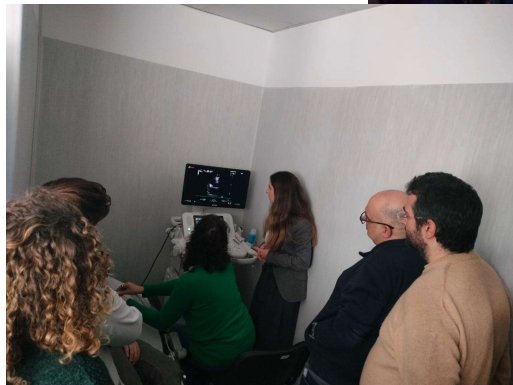
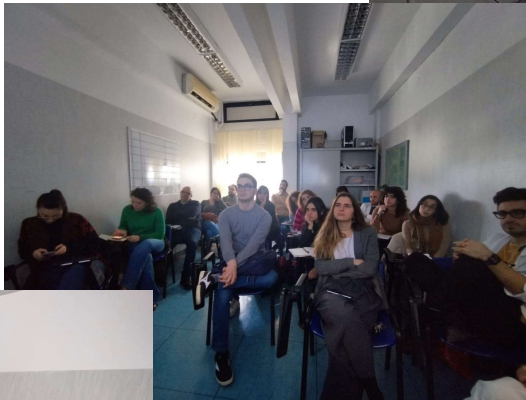


POCUS

a single district (heart, lungs, large vessels and abdomen) will be addressed each day. There will first be a theoretical lecture and then the residents will practice on special workstations.

Each day 30 minutes of theory followed by one hour of practice on 4 workstations

1. Lung
2. Abdomen
3. Heart
4. Big Vessels



POCUS

THE FIFTH PILLAR OF BEDSIDE MEDICINE

POINT-OF-CARE-ULTRASOUND IN MEDICINA INTERNA
Corso teorico-pratico di PoCUS in Medicina Interna

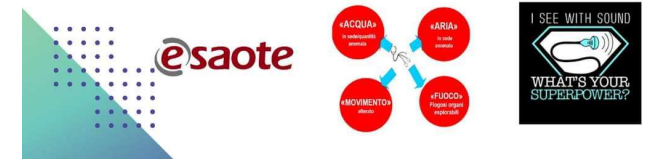
Responsabile scientifico: Dott.ssa Anna Lombardi

<p>Ore 8.30 REGISTRAZIONE PARTECIPANTI</p> <p>Ore 9.00 INTRODUZIONE AL CORSO Prof. Antonio Cittadini, Prof. Edoardo Bossone</p> <p>Ore 9.30 FISICA DEGLI ULTRASUONI E SEMEIOTICA ECOGRAFICA Dott. Luigi De Vito</p> <p>Ore 10.00 PoCUS CARDIACA Prof. Alberto M. Marra Prof. Michele Arcopinto</p> <p>Ore 11.00 Break</p>	<p>Ore 11.30 PoCUS POLMONARE Dott.ssa Federica Giardino</p> <p>Ore 12.00 PoCUS VASCOLARE Dott.ssa Mariarosaria De Luca</p> <p>Ore 12.30 PoCUS ADDOMINALE E CONCLUSIONI Dott.ssa Anna Lombardi</p> <p>Ore 13.00 Light lunch</p> <p>Ore 14.00 ESERCITAZIONI PRATICHE IN PICCOLI GRUPPI</p>
---	--

Il corso è riservato agli Assistenti in Formazione Specialistica in Geriatria a partire dal II anno e per un numero massimo di 15 partecipanti. Le adesioni saranno raccolte previa richiesta di adesione a partire dalle ore 20:00 del 20 febbraio 2024 via mail all'indirizzo anna.lombardi@unina.it.

27 Febbraio 2024

Aula seminari "Arcopinto"
Edificio 18, Policlinico
Federico II

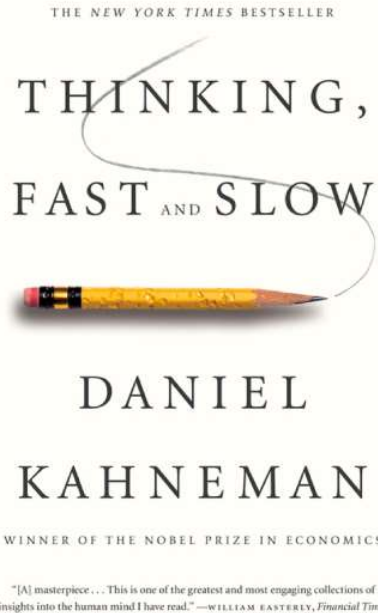


Non-clinical topics

4



Specific workshops on topics of non-clinical relevance but essential for the training of a young internal medicine resident such as: empathy, environmental impact of modern medicine, burn-out. Possibility to organize team-building activities.



- 1. Emotion management:** Educating residents on managing emotion recognition and management of medical emergencies
- 2. Communication and Empathy:** Providing training in effective communication with patients, families, and interdisciplinary healthcare teams, including breaking bad news, discussing treatment options, and fostering shared decision-making.
- 3. End-of-Life Care:** Addressing topics related to palliative care, hospice care, advance directives, and ethical considerations in end-of-life decision-making.
- 4. Mental Health and Well-being:** Addressing the mental health challenges faced by physicians, including burnout, stress management, resilience, and strategies for maintaining work-life balance.





Case-Reports from the residents

Participants will be asked to submit (1 per country) a case report which will be allocated specifically on one of the following categories. Therefore, each day case reports will be clustered according to the following topics:

-Errors in medicine

-Abnormal presentation of common disease

-Diagnosis of rare disease with common clinical presentation

-Overtreatment/Overdiagnosis.



“Never first time on a patient”
Series of hands-on practical workshops from a medical simulation lab.



- Possible workshops with simulation scenarios for
- upper airway management (intubation)
 - Pericardiocentesis
 - central venous catheter placement
 - Toracentesis
 - Paracentesis
 - Rachycentesis
 - Temporary pacemaker placement
 - Politrauma management



SOCIAL EVENTS

BOAT TRIP OF CITARA AND SANT'ANGELO BAY



Visit to Citara Bay between drinks and swimming from the boat.
Dinner in front of San Pancrazio and the Grotto of Love with its spectacular interior during sunset
Return by boat to the Bay of San Montano





THE BUDGET

The budget

The table below is a tentative budget considering the presence of 40 residents:

Quantity	Description	Unit Price	Sum total
20	Double rooms for residents	100	12000
8	Single rooms for Faculty members and tutors	70	3360
7	Travel costs for speakers	450	3150
100	Transfers from/to airport	39	3900
1	Daily Bus transfer to Colomabaia	495	2475
1	Website and platform for subscription	2000	2000
1	Graphic materials (banners, printed programs)	500	500
1	Service at Colomabaia (microphones, technical support)	2000	2000
1	Meals and coffee breaks at Colomabaia	1000	5000
1	Social Event	5000	5000
		Total	39385

A scenic view of the sea at sunset or sunrise. The sky is a pale, clear blue. In the distance, a range of mountains is visible under the soft light. The sea is a deep, vibrant blue, and a brilliant, shimmering reflection of the sun stretches across the horizon, creating a path of light that leads towards the viewer. The water's surface is textured with gentle ripples, and numerous bright, starburst-like reflections of light are scattered across the foreground and middle ground, adding a magical and sparkling quality to the scene.

We are looking forward to host you in Ischia



SMC
SCUOLA DI MEDICINA E CHIRURGIA
UNIVERSITÀ DEGLI STUDI DI NAPOLI
FEDERICO II



- 3 degrees in Medicine and Surgery (Italian, English, Medicine and Technology)
- 18 degrees for paramedics
- 9 PhD programs
- 43 medical specialty program for MD

To date almost 10 000 students and 3000 post graduated attends the school

Useful information

WEATHER	CONNECTIVITY	LANGUAGE	CURRENCY	HOSPITAL
Days are usually hot with balmy evenings. The average daily maximum in June is 29 C and the average daily minimum is 18 C.	The island is served by ferries and hydrofoils that connect it to ports in Naples. Naples is a major city and transport hub for the south of Italy and is well-served by a modern airport, various shipping ports and a healthy transport infrastructure including trains, buses, trams, and taxis.	Italian is the native language on the island but most people working in the tourism industry speak at least one other language, with German and English being the most widely spoken second languages.	Italy is a founding member of the European Union and one of the first countries to adopt the euro on 1 January 1999. In Ischia, all major credit cards are widely accepted as payment methods.	In Ischia, the main hospital is the Anna Rizzoli Hospital, located in the municipality of Lacco Ameno. The facility features a 24-hour active Emergency Department.