



The Korean Association of Internal Medicine

EFIM Associate Membership Presentation

Dong-Jun Lim, MD
The Director of the External Affairs Board



| **Foundation of KAIM**

- **December 23, 1945**

Founded as the Chosun Society of Internal Medicine

- **August 15, 1948**

Renamed as the Korean Association of Internal Medicine (KAIM)



| Mission

As a central academic society in healthcare, we take the lead in the advancement of medical care and assume responsibility for the health of the people.



| Vision & Core Values

Vision

The Best Korean Association of Internal Medicine for the People

Core Values

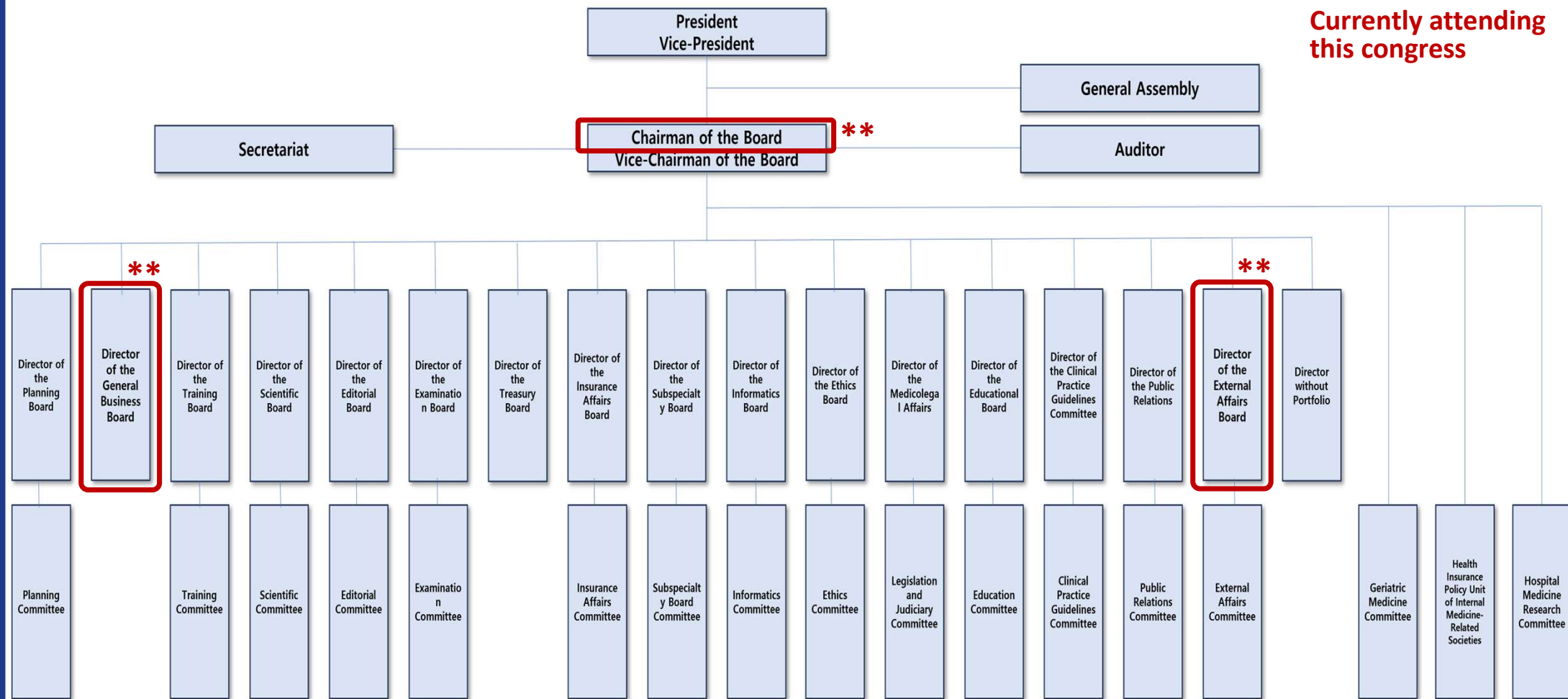
Professionalism, Communication & Cooperation, Reliability

- Enhance members' pride and satisfaction
- Advance core projects
- Promote the advancement of medical care
- **Strengthen operational efficiency**
- **Reinforce public-interest activities**



Organizational Structure

Currently attending
this congress**



Slide 5

동임1

아래 이사 & 이사회 글자 크기는 어쩔 수 없을 듯 합니다. 단지 위 부분 빨간색 box 부분은 조금 글자를 크게 하는 것이 좋을 것 같아요. 제가 고치려고 하다가보니 사진이라 안 되는군요.

& 제가 이 미팅의 참석자를 따로 표시하여 발표시에 잠깐 이야기하면 좋을 것 같습니다. 표시를 추가하였습니다.

임동준, 2026-03-02T11:25:39.613



| Number of Members (as of 2025)

Category	University Hospitals	Training Hospitals	Private Clinics	Others	Total
Board Certified	4,352	1,114	5,007	11,305	21,778
Residents	1,158	232	-	355	1,744
Total	5,510	1,346	5,007	11,659	23,522



| Education Programs

Training of internal medicine residents

- **Number of training institutions: 121**
- **Duration of training: 3 years**
- **Educational programs for residents**
 - **Core competency training education for internal medicine residents**
 - **Excellent case presentation meeting for internal medicine residents**
(support for participation in international conferences)
 - **Ultrasound education for internal medicine residents, POCUS**
(Point-Of-Care Ultrasound)



| Education Programs

Subspecialty board system in internal medicine

- **Number of training institutions: 102**
- **Duration of training: 1 year (2 years for Gastroenterology)**
- **Subspecialties**
 - **Gastroenterology, Cardiology, Pulmonology, Endocrinology-Metabolism, Nephrology, Hemato-Oncology, Infectious Diseases, Allergology, Rheumatology**
- **Number of certified subspecialists (as of 2025): 10,504**



| Annual Congress and Continuing Education

Annual Congress (Spring and Autumn)

Twice a year

**Core competency training education
for internal medicine residents**

Three times a year

Continuing medical education courses for internists

Twice a year

Continuing education for subspecialists in internal medicine

Once a year



Annual Congress (Spring and Autumn)

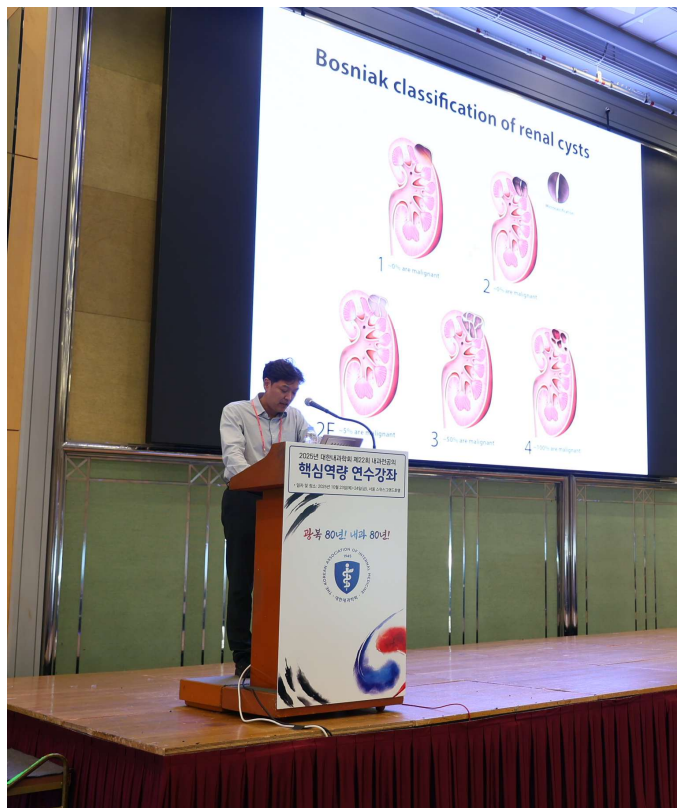
Twice a year





Core competency training education

Three times a year





Continuing education for subspecialists in internal medicine

Once a year





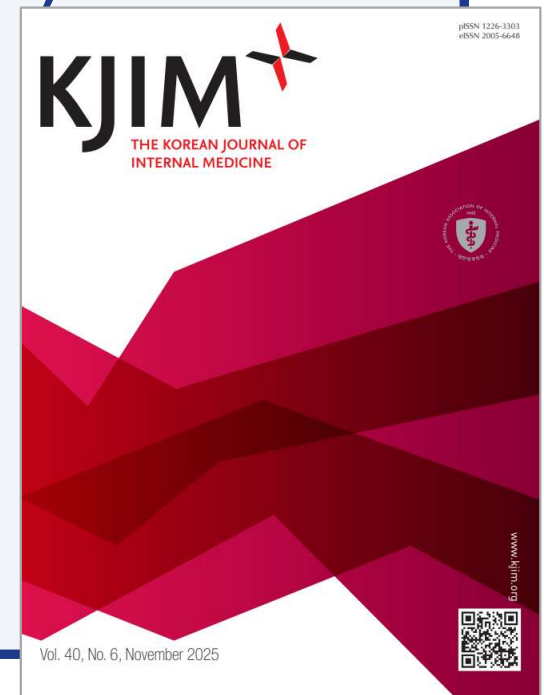
Journal Publication

International journal

The Korean Journal of Internal Medicine (KJIM)

- Published bimonthly (6 times/year), open access (January, March, May, July, September, November)
- Impact Factor 2024: 2.4 (Q1)
- Indexed in Scopus, KoMCI, Synapse, PubMed, PubMed Central, EMBASE, BIOSIS Preview, Crossref, Google Scholar, KoreaMed
- ISSN: 1226-3303 / eISSN: 2005-6648

<https://www.kjim.org/>





Journal Publication

Domestic journal

The Korean Journal of Medicine (KJM)

- Published bimonthly (6 times/year), open access (February, April, June, August, October, December)
- Indexed in KoreaMed, KoMCI, Google Scholar
- ISSN: 1738-9364 / eISSN: 2289-0769

<https://www.ekjm.org/>





| Purpose of EFIM Associate Membership

Strengthen global networks

Enhance professional development

Promote research and innovation

International academic exchange

**Sharing education and training models for trainees
and young internists**



Purpose of EFIM Associate Membership

Strengthen global networks

- Build collaborative partnerships with EFIM member societies
- Participate in EFIM committees and scientific networks

Enhance professional development

- Exchange best practices in internal medicine education
- Organize joint workshops and CME programs

Promote research and innovation

- Develop multicenter collaborative research projects
- Encourage joint publications and research networks



Future Collaboration Areas between KAIM & EFIM

International academic exchange

- Promote participation in ECIM and KAIM scientific meetings
- Facilitate exchange programs for trainees and young internists

Sharing education and training models for trainees and young internists

- Exchange residency and fellowship training systems
- Develop joint educational platforms and learning resources

Thank You

The Korean Association of Internal Medicine (KAIM)
2501-101, Lotte Castle President, 109 Mapo-daero
Mapo-gu, Seoul, Republic of Korea
<https://www.kaim.or.kr/>



English site - <https://eng.kaim.or.kr/>

Slide 18

동임1

영어 사이트를 따로 넣는 것이 좋을 것 같아요.
임동준, 2026-03-02T12:14:10.382