



ROYAL  
COLLEGE *of*  
PHYSICIANS *of*  
EDINBURGH

## **Royal College of Physicians of Edinburgh**

**Presentation to EFIM  
General Assembly,  
15<sup>th</sup> March 2023**

# Who we are



- An international, charitable membership organisation based in Edinburgh, Scotland
- Founded by Royal Charter in 1681
- Focus on
  - Education
  - Training
  - Standards inc health policy
  - Heritage







# Education and Professional Development



Symposia and Webinars, EMUs and IMUs



Research, travel and development grants



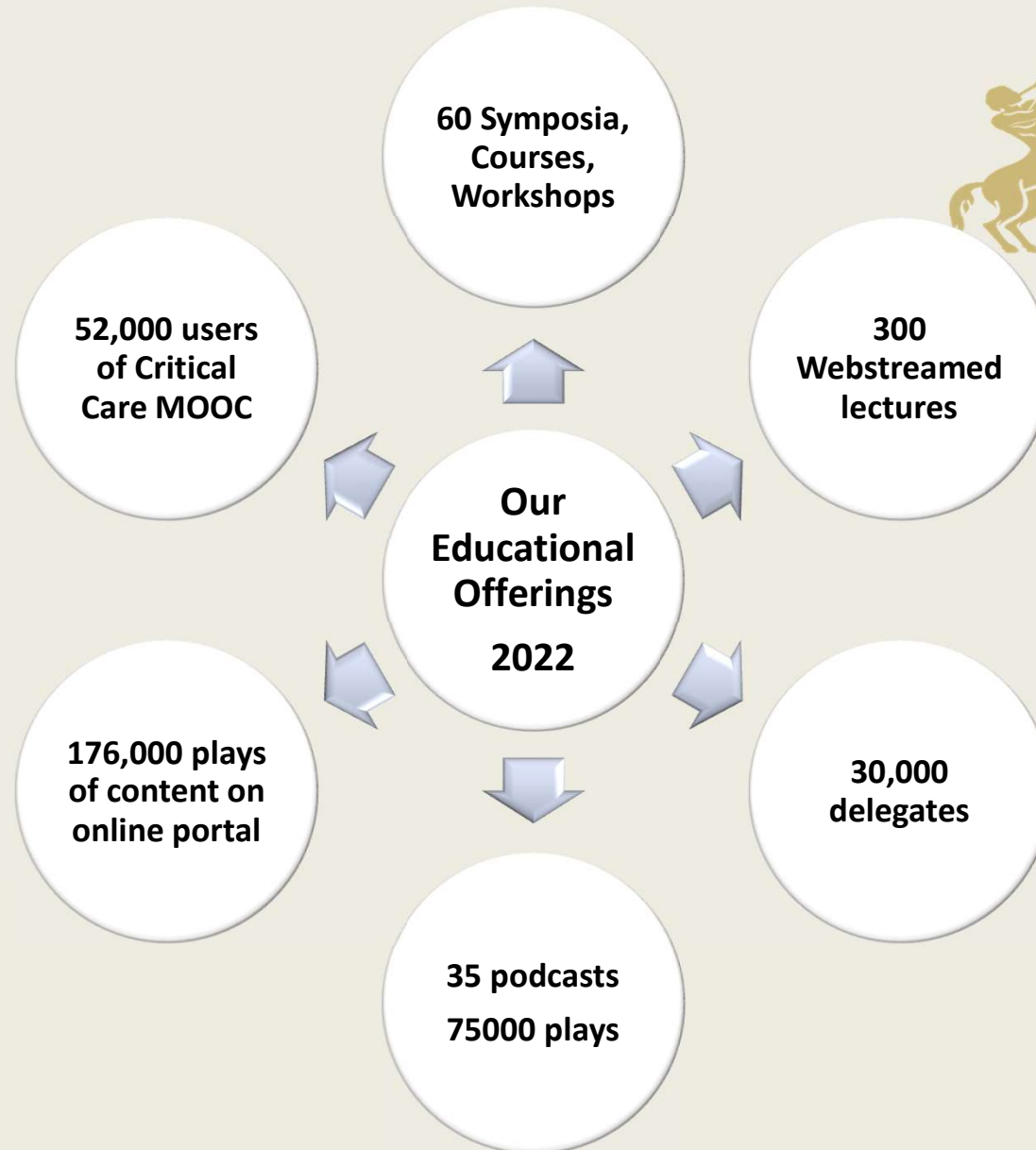
MSc Programmes and MOOCs



Medals, Awards and Prizes



ROYAL  
COLLEGE *of*  
PHYSICIANS *of*  
EDINBURGH









# Celebrating the 50th anniversary year of the College *Journal*

ROYAL COLLEGE OF PHYSICIANS OF EDINBURGH

Journal  
of the Royal College of Physicians of Edinburgh

3  
The problem of predatory journals

13  
Stroke prevention in atrial fibrillation

7  
Kidney disease

Est. 1971  
50<sup>th</sup>  
Anniversary  
Year

rcpe.ac.uk/journal

RCPE  
Royal College of Physicians of Edinburgh

THE JOURNAL  
of the Royal College of Physicians of Edinburgh

**CLINICAL**

- Reliability of redox: Parkinson's disease etiological
- Hypertension in obstructive sleep apnoea
- Tolerability in patients with fluid retention due to heart failure
- Chronic fatigue syndrome: not all fatigue is the same
- Cases of the quarter: Linnæus's syndrome, circadian rhythm sleep disorders and atypical antidepressants

**EDUCATION**

- Current controversies: Advanced techniques for the management of symptomatic aortic stenosis in the elderly
- CME: Cannabis and the lung
- Non-surgical treatment for early prostate cancer
- Breast cancer
- Head and neck cancer
- Symptom review: Achieving better outcomes after surgery in older people

**HISTORY**

- Observations from historical accounts of prion-associated diseases (v<sub>1</sub> and v<sub>2</sub>)
- Churchill, Moran and the struggle for survival
- Health and medicine: Lord Howe Island v St Giles

Volume 46  
Issue 1  
December 2010  
ISSN 1473-2175 (print) ISSN 2044-8191 (online)  
<http://www.rcpe.ac.uk/journal/online.php>

Royal College of Physicians of Edinburgh January 2011

CHRONICLE

ROYAL COLLEGE OF PHYSICIANS OF EDINBURGH

Journal

# Our exams have a long history



ROYAL  
COLLEGE of  
PHYSICIANS of  
EDINBURGH



R. C. P. EDIN. Name, *Thos. Alex. Campbell M.D. M.B.*

MEMBERSHIP EXAMINATION.

WRITTEN.

1st Day. Date <i>10<sup>th</sup> April</i> 18 <i>94</i>		* 2nd Day. Date <i>11<sup>th</sup> April</i> 18 <i>94</i>		
PRACTICE OF MEDICINE.	THERAPEUTICS.	REMARKS.	OPTIONAL SUBJECT.	REMARKS.
<i>60</i>	<i>60</i>		<i>75</i>	

1st Day. ORAL. Date *10<sup>th</sup> April* 18*94*

PRACTICE OF MEDICINE.	THERAPEUTICS.
<i>Peripneural neuritis - Ascending Paralysis - Disease of Heart - Phthisis - Acute Tuberculosis -</i>	<i>Hæmoptysis, management of - Climatic treatment Phthisis</i>

Each College of Physicians has run examinations for over 200 years

A unified UK examination for the Membership since the 1970s



# The MRCP(UK) Examination

The biggest postgraduate medical examination in the world



ROYAL  
COLLEGE *of*  
PHYSICIANS *of*  
EDINBURGH



- 26000 candidates per year
- 27 countries
- Two difficult written exams
- One directly observed clinical skills examination (PACES)

# Setting Standards of patient care



ROYAL  
COLLEGE of  
PHYSICIANS of  
EDINBURGH

We write the  
curricula for  
internal  
medicine and  
specialties

We create,  
develop and  
set passing  
standards for  
examinations

We  
contribute to  
oversight of  
training  
quality

We influence  
healthcare  
policy

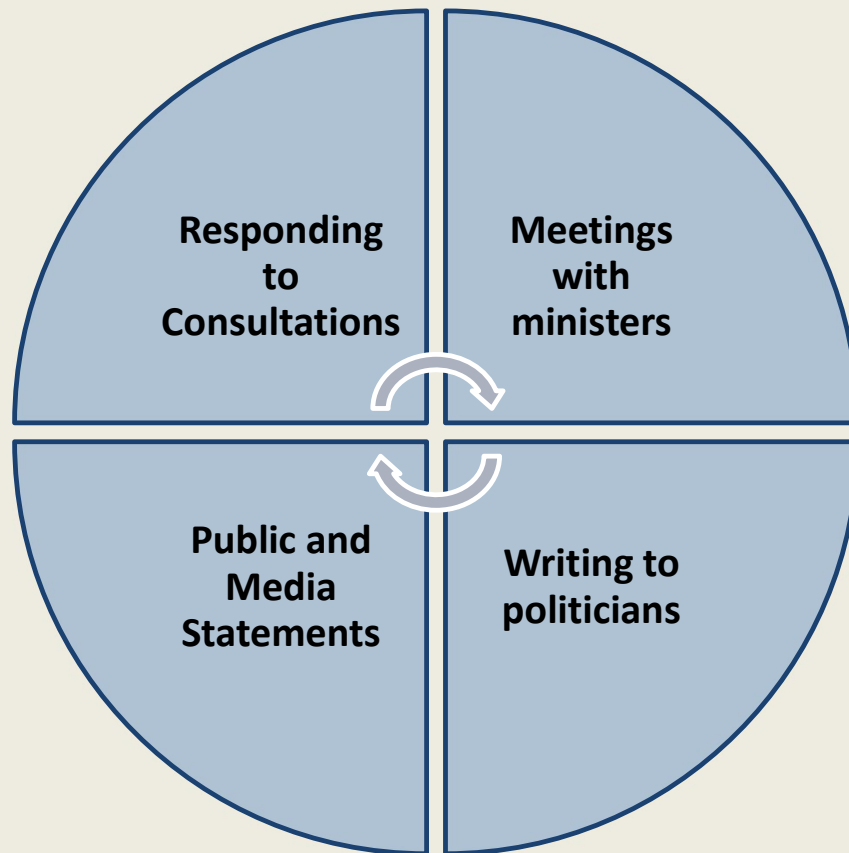
## Outside the UK

- **Supporting Education**
- **Offering examinations**

Interaction and Collaboration with other Colleges, the GMC, and Statutory Education Bodies



# Influencing Healthcare Policy



- Direct meetings with Chief Medical Officers ( esp. through the Pandemic)
- Collaboration with all other Colleges via the Academy of Medical Royal Colleges

# How do we achieve all this?

How our charity is funded



ROYAL  
COLLEGE of  
PHYSICIANS of  
EDINBURGH



Subscriptions  
from our  
Fellows and  
Members



Examination  
fees



Attendance  
fees for  
educational  
events



Legacies and  
Donations

No governmental, Big Pharma, NHS or other funding



# We look forwards to working with you!



ROYAL  
COLLEGE *of*  
PHYSICIANS *of*  
EDINBURGH

